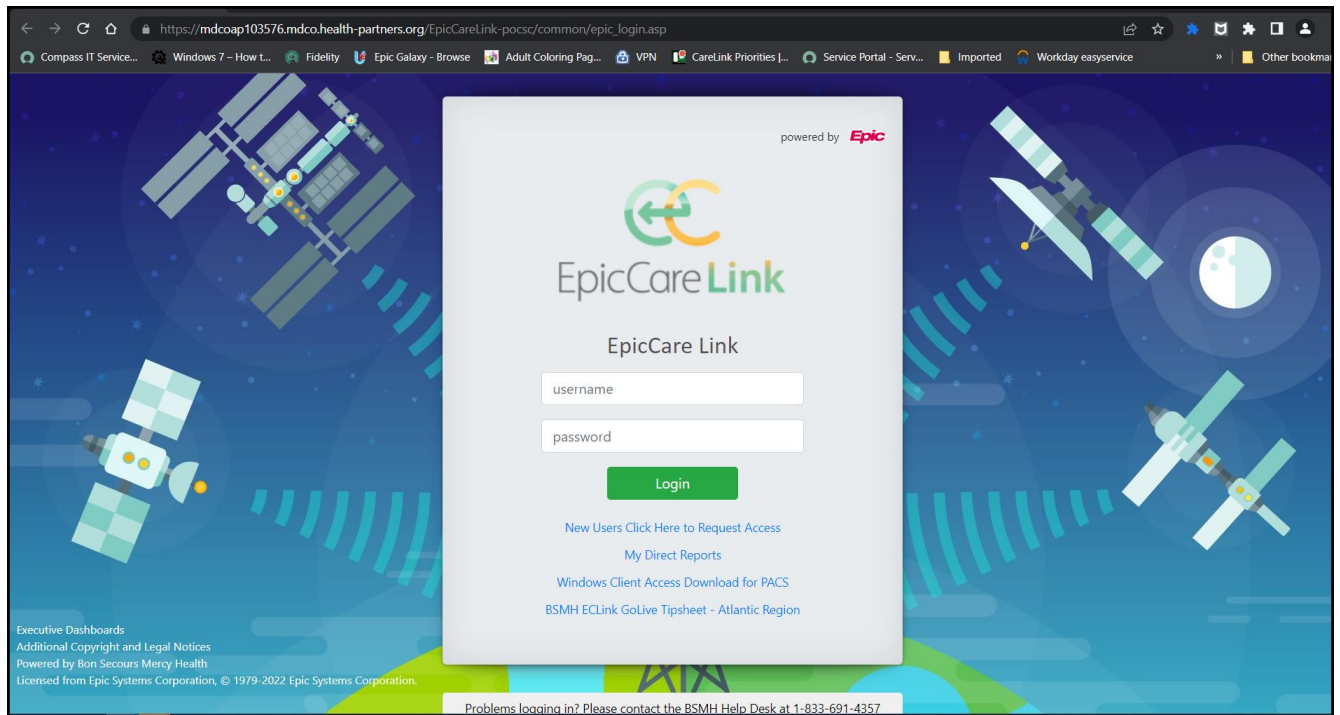
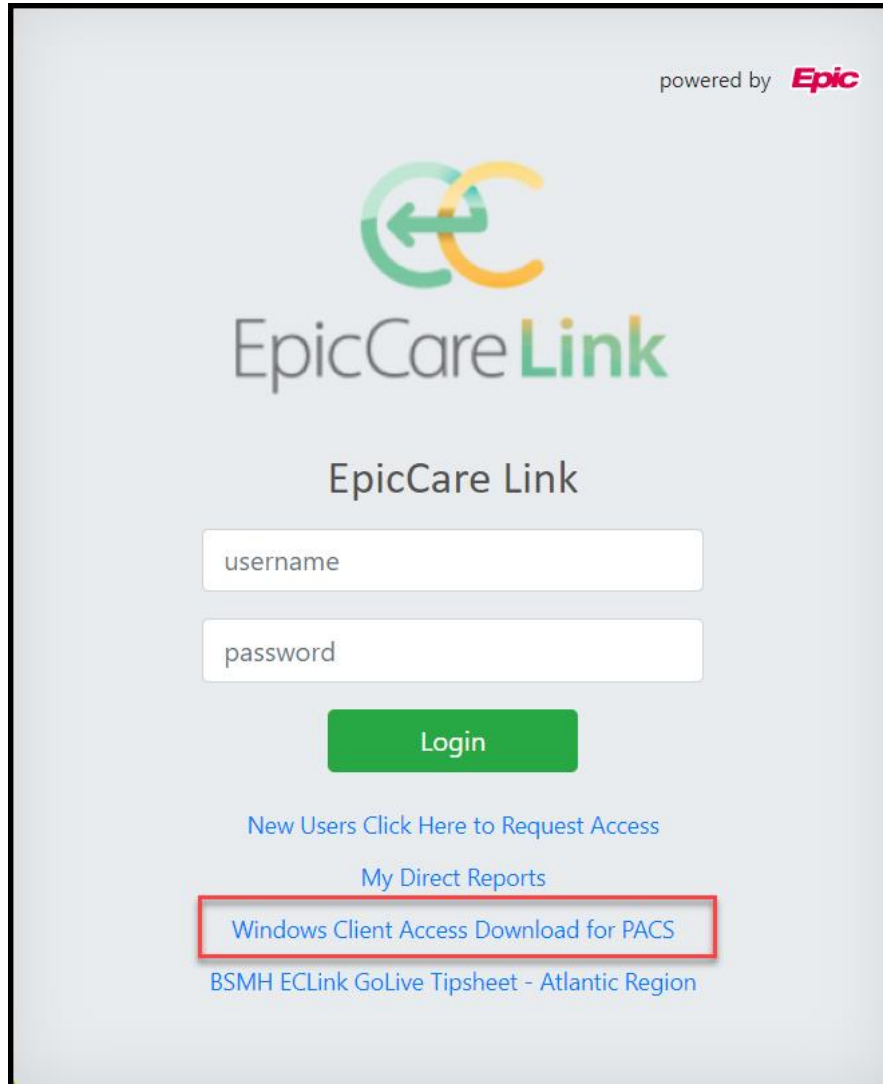


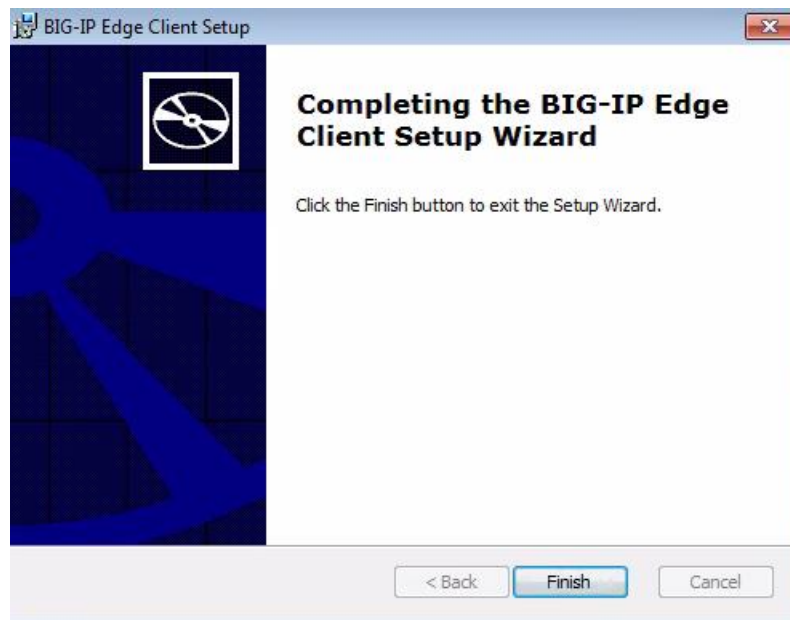
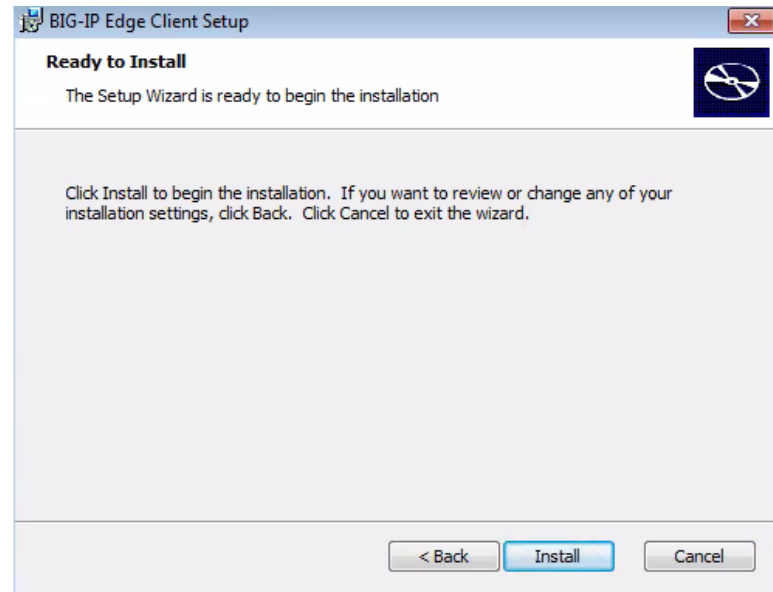
ConnectCare Link users will log into the new Epic on or after their market Go-Live date using the new EpicCare Link URL. Here are some things to expect when first signing in EpicCare Link.

1. New EpicCare Link URL: <https://carelink.health-partners.org/>

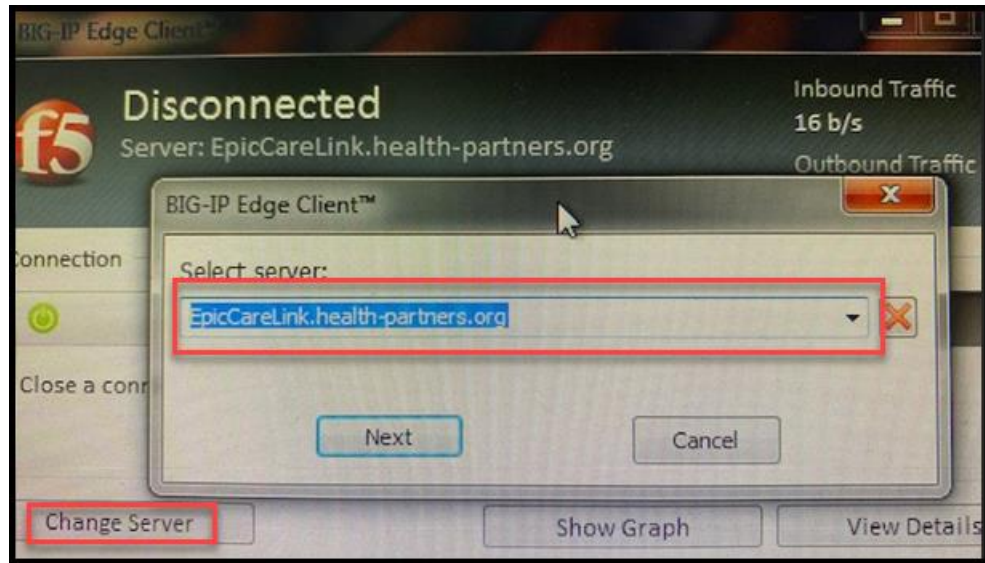


2. Use your current ConnectCare Link credential (user name/password) to log in.
3. Enroll with two factor authentication after your first log in.
 - a. Your previous 2FA enrollment will not be converted in EpicCare Link so re-enrollment is required.
 - b. Once logged in, your access in EpicCare Link is similar or the same as in ConnectCare Link.
4. PACs are available in EpicCare Link. Follow these steps to access the images:
 - a. Download, run, and install the Windows Client Access from the landing page.





- b. From your Windows Start, search and open the Big-IP Edge Client
- c. Click on **Change Server**, and select “EpicCareLink.health-partners.org” from the drop down and then click **Next**



d. Connect to the F5 using your credential.



e. Once you are connected, it redirects to EpicCare Link Home page and you can access the application.

f. If you click the PACS hyperlink in Chart Review, Change HealthCare will prompt to download the station to view images. Select the second option to download Station Lite version.

Mercy Health - Southwest Ohio - MDCOAP105235


Change Healthcare Radiology Solutions

Change Healthcare Radiology Solutions enables hospitals and clinics to acquire, distribute and archive medical images and diagnostic reports across the enterprise.

Log in with Radiology Station	This viewer includes the complete toolset for clinical reporting of PACS studies.
Log in with Radiology Station Lite	A lighter, faster version of the viewer for non-reporting use. Not sure? View available features.
Log in without Radiology Station	Includes PACS administration and other PACS-related applications.


Having problems logging in? Try our [Troubleshooting Guide](#)

Copyright 2019 Change Healthcare LLC and/or one of its subsidiaries.



g. Allow the add-on if you get something like this screenshot below or click on **retry the download.**

Change Healthcare Radiology Solutions Radiology Station Lite Setup Warning

 The Change Healthcare Radiology Solutions Radiology Station download has been blocked by the browser. Please look for the Internet Explorer Information Bar at the bottom of this window. You need to allow the add-on.

This webpage wants to run the following add-on: 'Change Healthcare Radiology Solutions System Che...' from 'Change Healthcare, Inc.'. [What's the risk?](#)

You may [retry the download](#)

If problems persist, you may try our [Troubleshooting Guide](#) for more information, or contact your system administrator for assistance.

h. Run and continue the installation of Change Healthcare Radiology Solutions.